

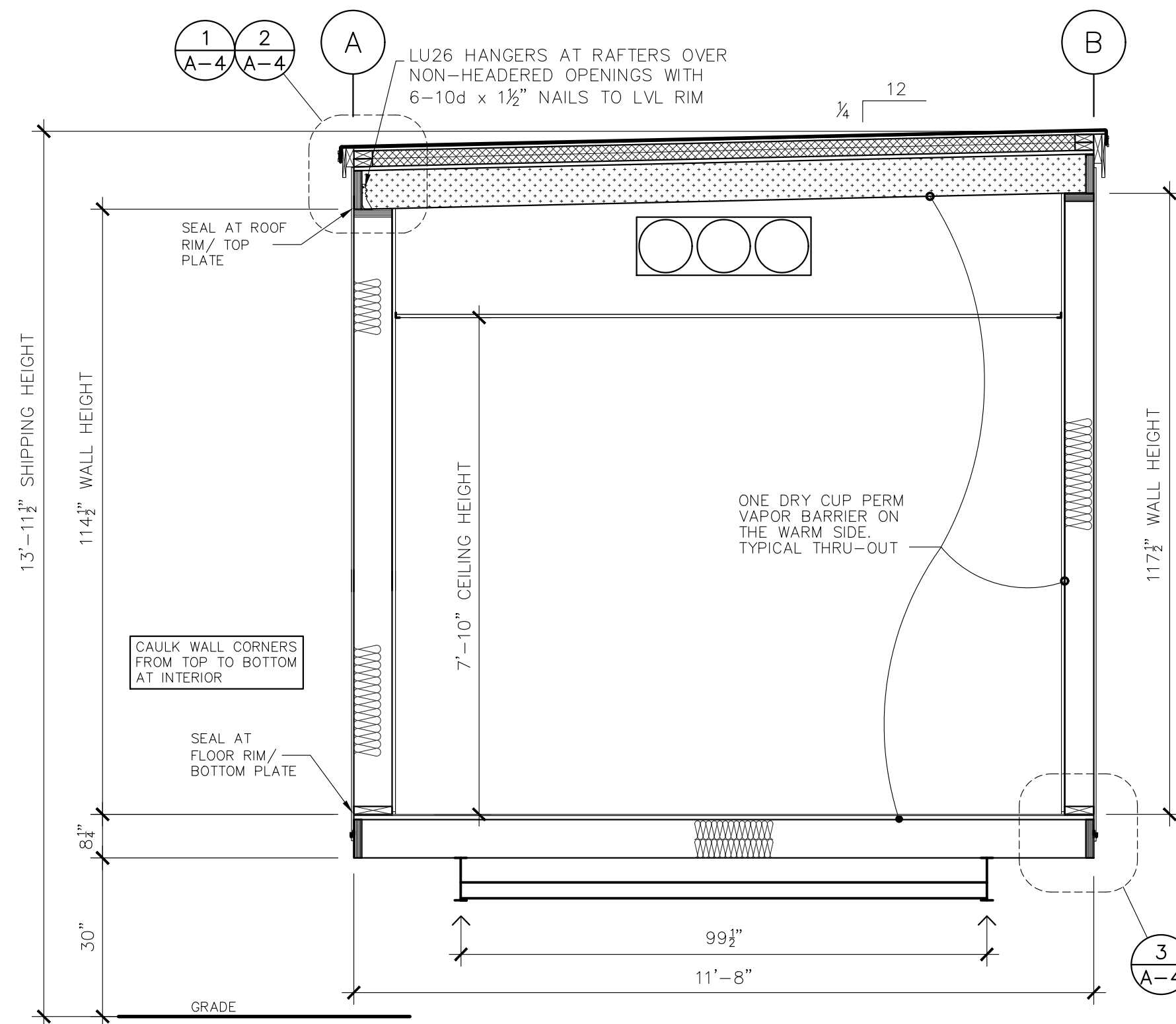
MATERIAL LIST

ROOF:
 ROOFING.....45 MIL. TPO CARLISLE SURE-WELD – FULLY ADHERED TO ½" SECUROCK
 NOTE: TERMINATION BAR INSTALLED ON PERIMETER
 SHEATHING.....2 3/32" A.P.A. RATED SHEATHING (48/24) AIR BARRIER COMPONENT (¾" CDX PLYWOOD)
 FRAMING.....2x8 DF #2 RAFTERS @ 24"oc
 RIMS.....2x8 CONTINUOUS LVL 2.0E
 INSULATION.....R41 TOTAL:
 1st: R24 CELLULOSE BLOW-IN BETWEEN RAFTERS
 2nd: R17 (2) LAYERS 1½" RIGID ON TOP OF FRAMING
 CEILING.....SUSPENDED T-BAR (PER IBC 808.1)
 BOTTOM COVER.....CLASS "A" (AIR BARRIER COMPONENT)
 VENTING.....NONE

WALLS:
 SIDING.....76 SERIES LP SMARTSIDE PANEL T1-11 w/ GROOVES @ 8"oc – USE 10'-0" PANELS
 MOIST. PROTECTION.....WRAP LOWER 12" OF BUILDING w/ MOIST-STOP WRAP ENTIRE BUILDING w/ TYVEK BUILDING WRAP
 FASCIA.....5/8" NO GROOVE – FURRED OUT 1½"
 TRIM.....1 x 4 @ CORNERS, WINDOWS, AND DOORS
 NOTE: 2"x2" GALVANIZED FLASHING INSTALLED OVER SIDING AND UNDER CORNERS.
 FRAMING.....EXT.: 2 x 6 D.F. #3 or BETTER STUDS @ 16"oc
 2 x 8 AT GRID 'A' FOR PLUMBING
 INT.: 2 x 4 D.F. #3 or BETTER STUDS @ 16"oc
 TOP PLATE.....2 x 6 CONTINUOUS (DF#2 OR LVL 2.0E)
 BOTTOM PLATE.....2 x 6 D.F.
 INSULATION.....R-21 UNFACED FIBERGLASS BATTS
 INTERIOR FINISH.....CLASS "C" 0.090 FRP TEXTURED FINISH OVER 7/16" O.S.B. w/ 5/8" GYPSUM BD. ABOVE CEILING
 SKIRTING.....SHIP LOOSE

FLOOR:
 COVERING.....SHEET VINYL ALL ROOMS
 DECKING.....1st: 2 3/32" A.P.A. RATED STURD-I-FLOOR (AIR BARRIER COMPONENT)
 2nd: ½" ULTRAPLY XL
 FRAMING.....2x8 DF #2 FLOOR JOISTS @ 16"oc
 RIMS.....2x8 CONTINUOUS LVL 2.0E
 INSULATION.....R-30 UNFACED FIBERGLASS BATT
 NOTE: USE (2) LAYERS OF R-15
 BOTTOM COVER.....CLASS "A"

FRAME:
 TYPE.....BLAZER BUILT FRAME
 MAIN RAIL.....W10 x 12
 NOTE: FULL LENGTH 11 ga. 8" C-CHANNEL CROSSMEMBERS AT FRONT AND REAR
 AXLES.....(3) BRAKE, 8:00 14.5 14-PLY TIRES
 HITCH.....DETACHABLE
FASTENING REQUIREMENTS:
 FLOOR JOIST TO I-BEAM.....GRK RSS ¼x3 3/8" SCREWS OR SPAX ¼x3 POWER LAGS @ 16"oc
 (ALTERNATE SIDE TO SIDE OF EACH I-BEAM)
 END CROSSMEMBER CONNECTION TO END RIM JOIST.....(5) GRK RSS ¼x3 3/8" SCREWS OR SPAX ¼x3 POWER LAGS



SECTION - A-A

SCALE: 1/2" = 1'-0"

CUSTOMER APPROVAL

APPROVED
 APPROVED EXCEPT AS NOTED
 REVISE AS NOTED AND RESUBMIT
 APPROVED By _____ Date _____

PRELIMINARY
 NOT FOR CONSTRUCTION

COPYRIGHT 2021, BLAZER INDUSTRIES, INC. THIS MATERIAL IS THE EXCLUSIVE PROPERTY OF BLAZER INDUSTRIES, INC. AND SHALL NOT BE REPRODUCED, USED, OR DISCLOSED TO OTHERS EXCEPT AS AUTHORIZED BY THE WRITTEN PERMISSION OF BLAZER INDUSTRIES.



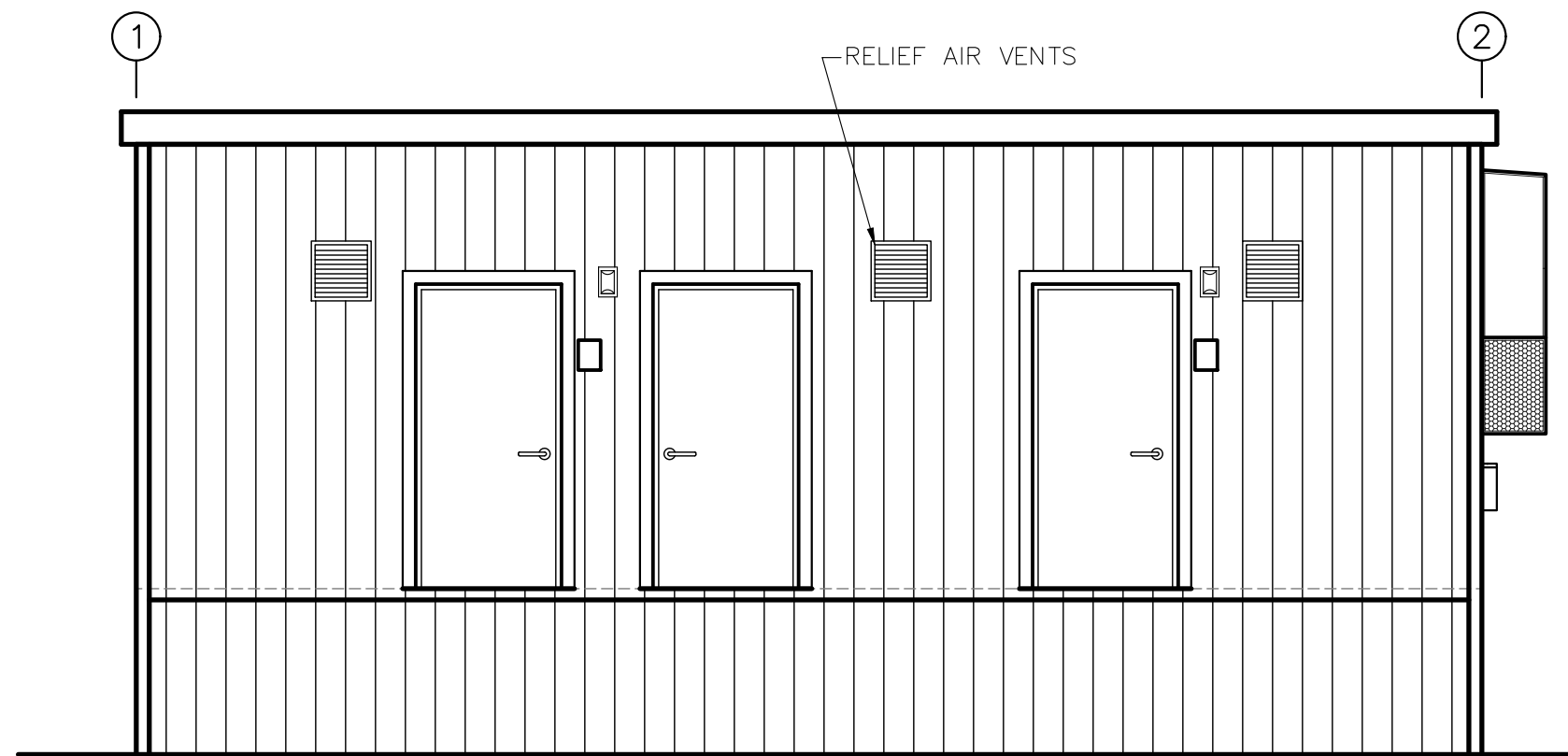
MOBILE
 12x30
 CA DOH

Restroom/Utility for:
Santa Clara Valley Water Dist.
 William Scotsman
 Morgan Hill, CA

Approved for Const:	Job No: 19911
File Copy:	A-2
Drawn By: AJB	
Issue Date: 7-29-21	

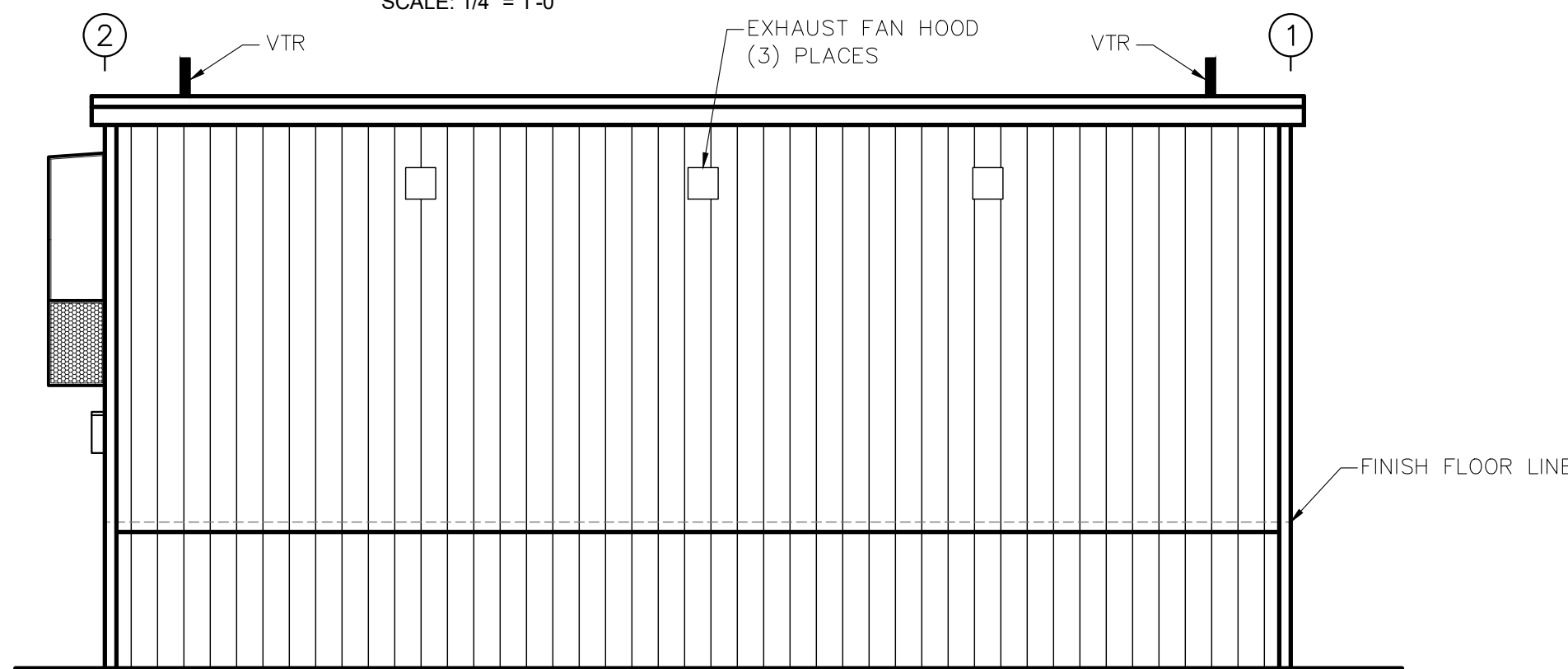
DATE	REVISION	BY

R:\2021 Drawings\Projects by Job Number\19911 Santa Clara 12x30 Restroom Utility.dwg, A-2, 7/29/2021 3:01:06 PM



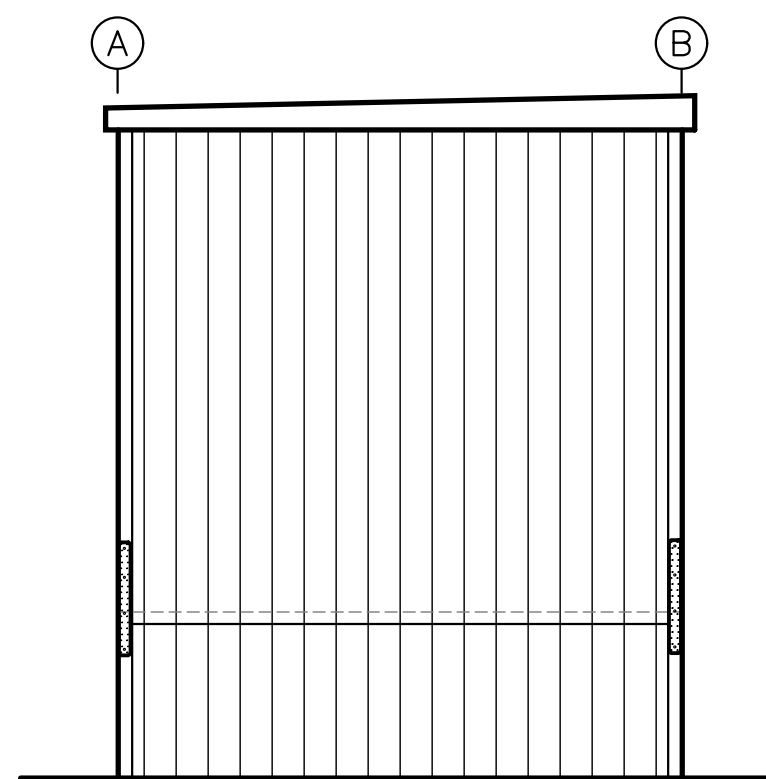
WALL B ELEVATION

SCALE: 1/4" = 1'-0"



WALL A ELEVATION

SCALE: 1/4" = 1'-0"



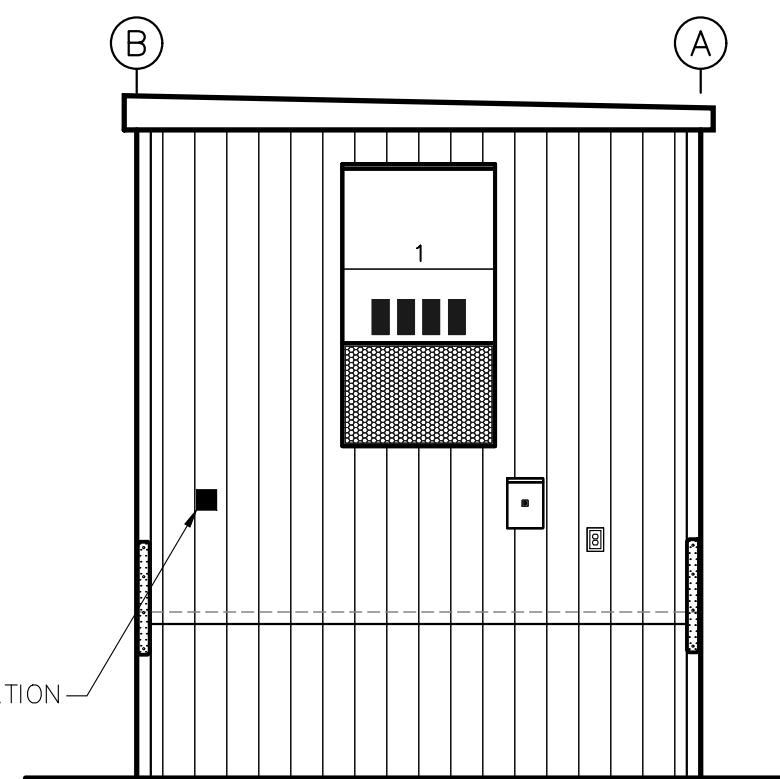
WALL 1 ELEVATION

SCALE: 1/4" = 1'-0"

WALL 1 & 2:

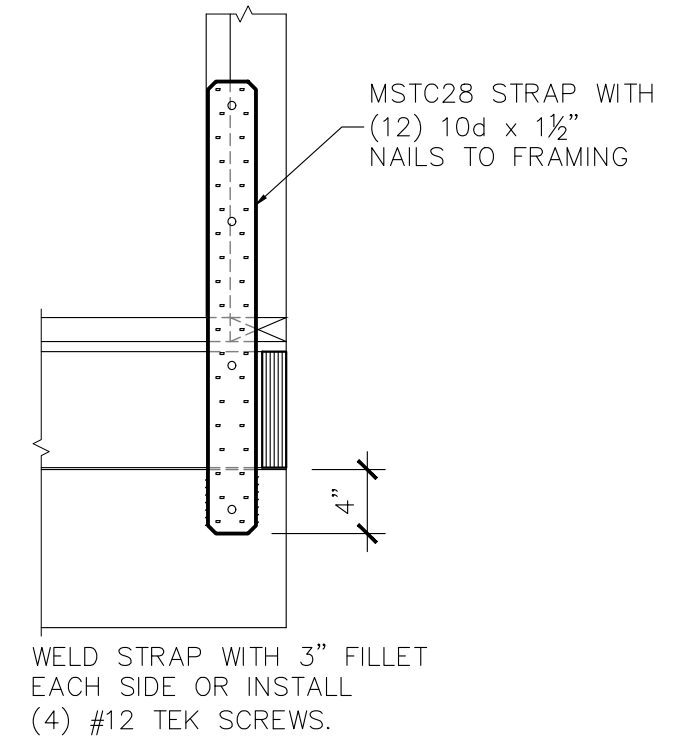
-INSTALL 7/16" LP SMARTSIDE SIDING WITH ALL EDGES SUPPORTED AND FASTENED WITH 0.113 x 2 3/8" GALV. NAILS @ 6"oc EDGE, 12"oc FIELD, 4"oc TOP & BOTTOM.

-USE MSTC28 STRAPS AT CORNERS, SEE DETAIL 1/A-3

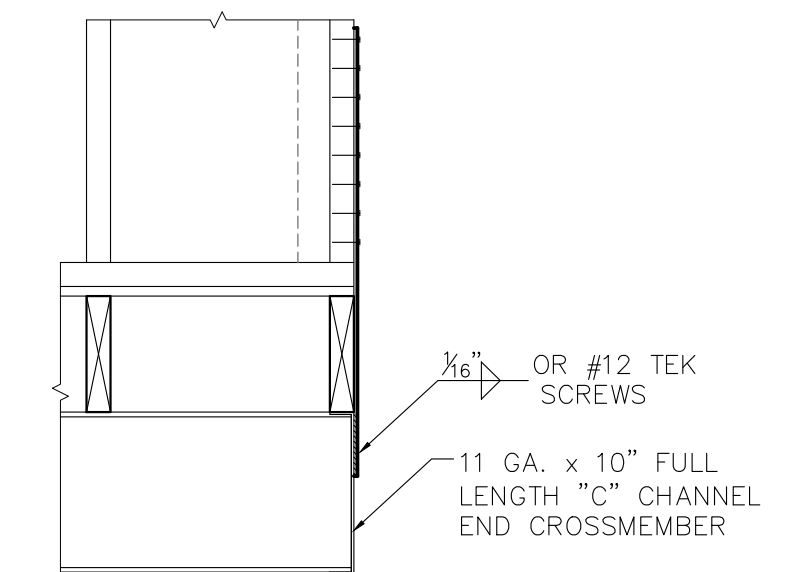


WALL 2 ELEVATION

SCALE: 1/4" = 1'-0"



FRONT VIEW



SIDE VIEW

1 STRAPPING DETAIL

CUSTOMER APPROVAL

- APPROVED
 - APPROVED EXCEPT AS NOTED
 - REVISE AS NOTED AND RESUBMIT
- APPROVED By _____ Date _____

PRELIMINARY
NOT FOR CONSTRUCTION

COPYRIGHT 2021, BLAZER INDUSTRIES, INC. THIS MATERIAL IS THE EXCLUSIVE PROPERTY OF BLAZER INDUSTRIES, INC. AND SHALL NOT BE REPRODUCED, USED, OR DISCLOSED TO OTHERS EXCEPT AS AUTHORIZED BY THE WRITTEN PERMISSION OF BLAZER INDUSTRIES.



MOBILE
12x30
CA DOH

Restroom/Utility for:
Santa Clara Valley Water Dist.
William Scotsman
Morgan Hill, CA

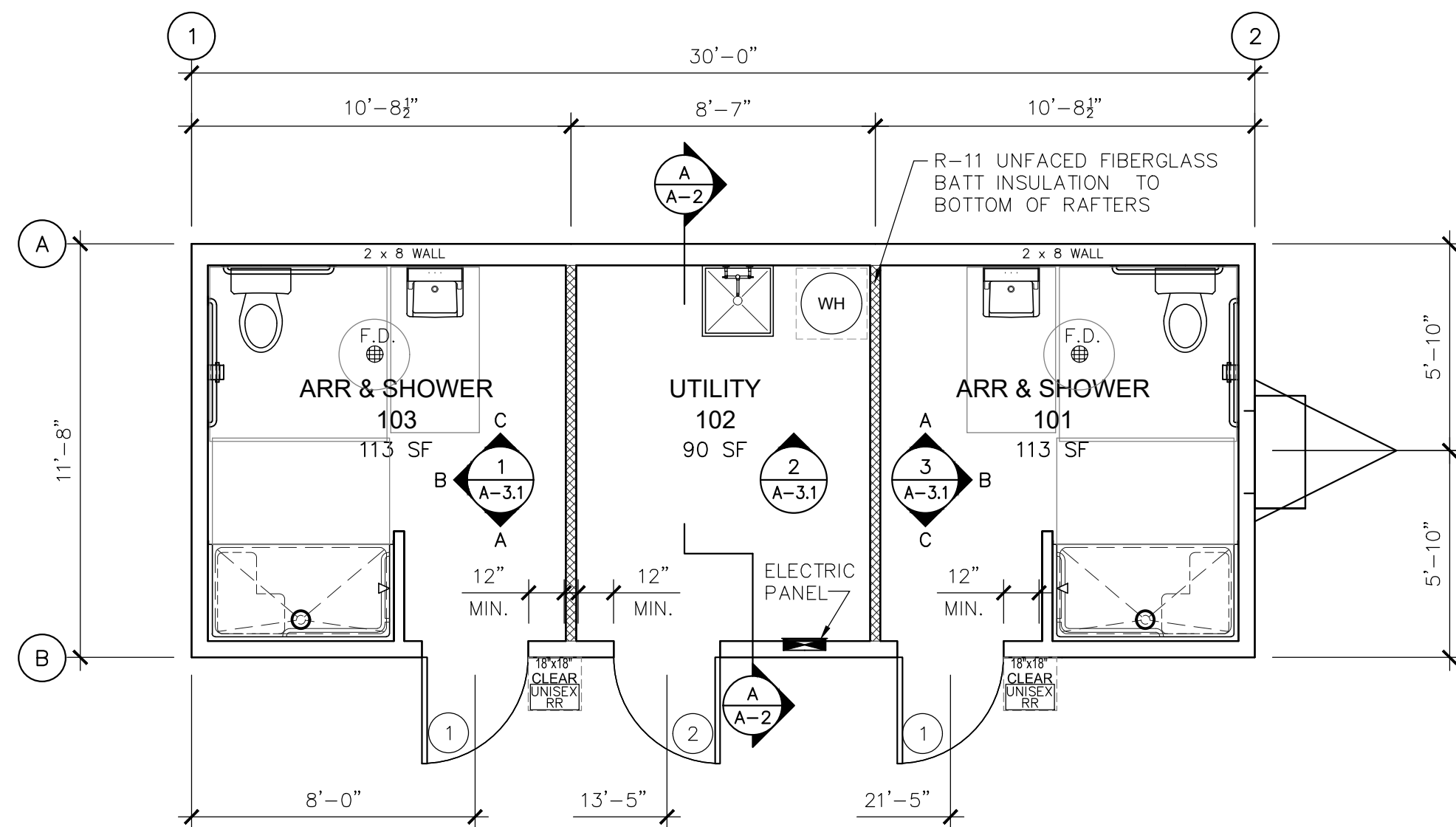
Approved for Const:
File Copy:
Drawn By: *AJB*
Issue Date: 7-29-21

Job No: 19911
A-3

DATE	REVISION	BY

R:\2021 Drawings\Projects by Job Number\19911 Santa Clara Restroom Utility.dwg, A-3, 7/29/2021 3:01:07 PM

R:\2022 Drawings\Projects by Job Number\19911 Santa Clara 12x30 RR Utility\19911 Santa Clara 12x30 Restroom Utility NEW 1.dwg, A-1, 3/1/2022 8:41:05 AM



FLOOR PLAN

SCALE: 1/4" = 1'-0"

NOTES:
 - THE TOP PLATES OF THE INTERIOR WALLS CAN SPAN A MAXIMUM OF 10'-0" BEFORE REQUIRING BRACING TO THE ROOF STRUCTURE OR AN INTERSECTING WALL.

CUSTOMER APPROVAL

- APPROVED
 - APPROVED EXCEPT AS NOTED
 - REVISE AS NOTED AND RESUBMIT
- APPROVED By _____ Date _____

PRELIMINARY
 NOT FOR CONSTRUCTION

2-22-22	REVISED SHOWER TO 30x60	TOM
3-01-22	REVISED BUILDING LENGTH TO 30' FROM 32'	TOM
DATE	REVISION	BY

COPYRIGHT 2022, BLAZER INDUSTRIES, INC. THIS MATERIAL IS THE EXCLUSIVE PROPERTY OF BLAZER INDUSTRIES, INC. AND SHALL NOT BE REPRODUCED, USED, OR DISCLOSED TO OTHERS EXCEPT AS AUTHORIZED BY THE WRITTEN PERMISSION OF BLAZER INDUSTRIES.



MOBILE
 12x30
 CA DOH

Restroom/Utility for:
Santa Clara Valley Water Dist.
 WillScot Morgan Hill, CA

Approved for Const:	Job No: 19911
File Copy:	
Drawn By: AJB / TOM	
Issue Date: 3-01-22	

A-1